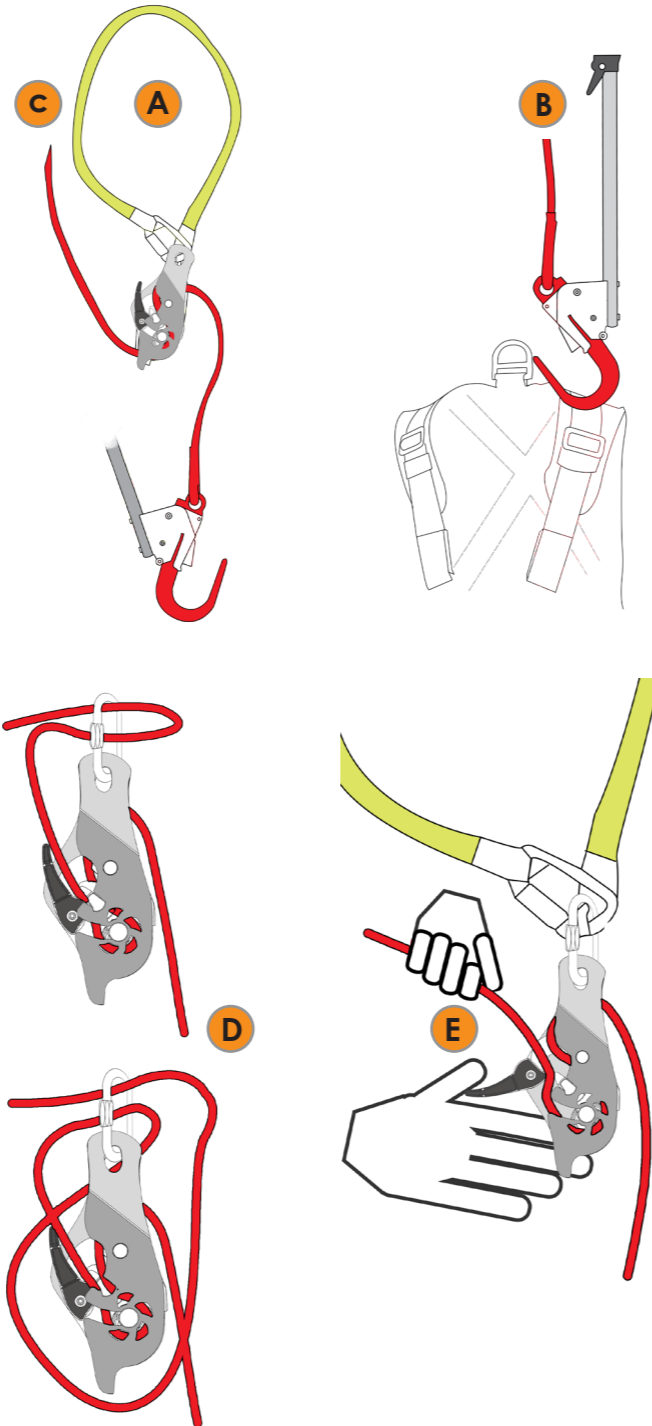


This equipment should only be used by Competent Persons, who have been trained in the use of this specific kit.

These Prompt Sheets are to be read in conjunction with user instructions for each item of the kit.

Lowering

1. Select an unquestionably sound anchorage structure, above casualty.
2. Pass anchor strop (A) around anchorage and connect karabiner to screwlink.
3. Fit open hook to end of pole. With control device half-threaded, extend pole to casualty (B). Attach hook to harness and pull to release, ensuring hook gate closes fully.
4. Pull rope to casualty tight by pulling tail end through device (C).
5. Fully thread control-device & lock-off by passing tail rope loop through the screwlink then around device (D).
6. Check all connections, then cut casualty's fall arrest lanyard, with shears.
7. Remove the 'lock-off' and gently lower casualty by holding tail rope and squeezing device handle into 'sweet spot' (E).

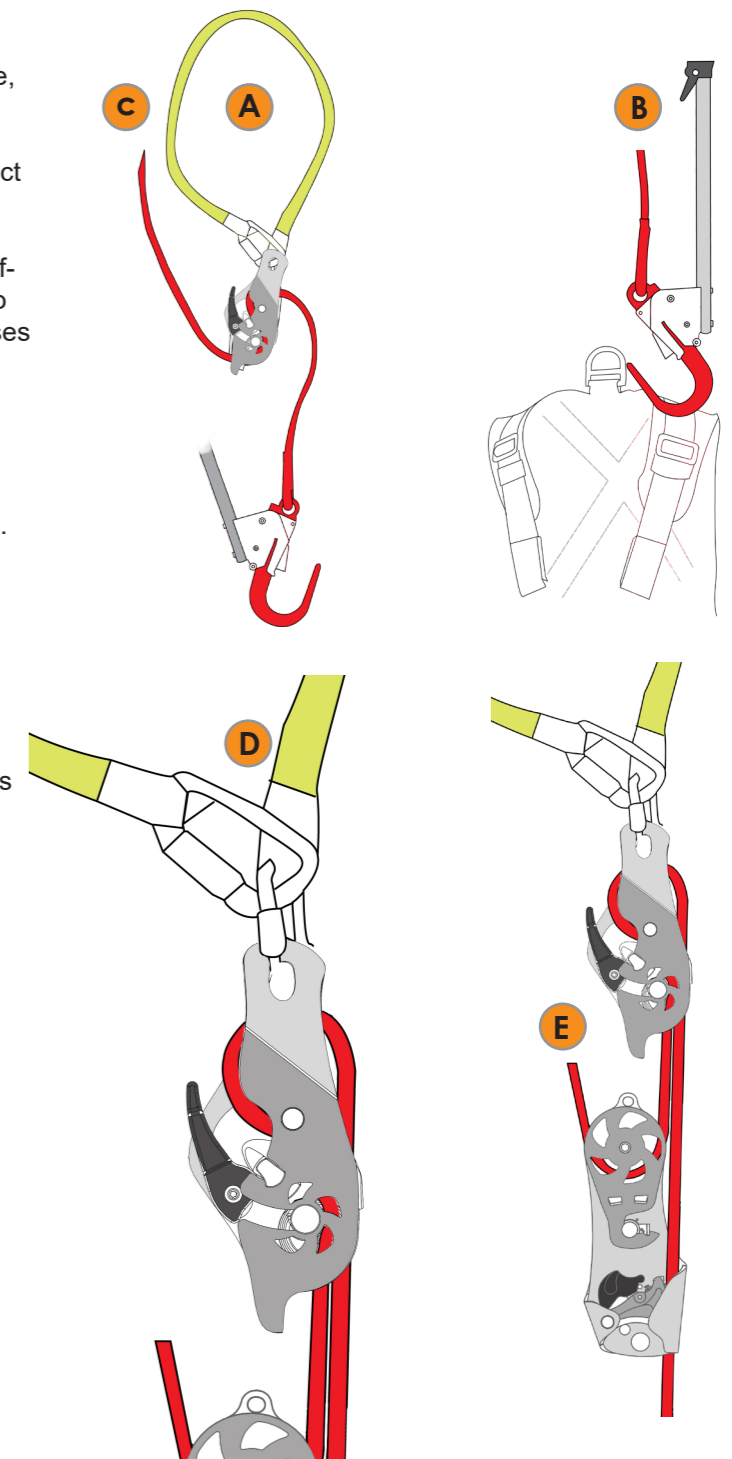


This equipment should only be used by competent persons, who have been trained in the use of this specific kit.

These user instructions are to be read in conjunction with user instructions for each item of the kit.

Raising

1. Select an unquestionably sound anchorage structure, above casualty.
2. Pass anchor strop (A) around anchorage and connect karabiner to screwlink.
3. Fit open hook to end of pole. With control device half-threaded, extend pole to casualty (B). Attach hook to harness and pull to release, ensuring hook gate closes fully.
4. Pull rope to casualty tight by pulling tail end through device (C).
5. Attach hauling-device to casualty rope as shown (D). DO NOT PUT DEVICE OVER EDGE
6. To raise casualty, pull tail rope (E).
7. When hauling-device reaches control-device, slide hauling-device back down rope.
8. Repeat steps 6 & 7 to incrementally raise casualty as required.



Kit Contents

CODE	DESCRIPTION
B50	Kari Transport bag 50L
CH01AM	Alloy scaffold hook
CKA1	Altair karabiner
CKS3	Astra karabiner
CSN08	Screwlink 8mm
D011	Quadra rescue device Alloy
D431	Hurricane Rescue Hauler
MSK2	Rescue shears with cord and pouch
MSRM	RescuePack pole
RS110G	Tectra 11mm rope
S25N120P	Sling, protected nylon



Assembly

1. Feed rope complete with modified scaffhook attached, into bag. Scaffhook end at top!
2. Place MSRM pole in bag, attach MSK2 shears + pouch to pole karabiner with CKA1
3. Thread D011 Quadra on to rope following diagram marked on device/ pictures in file. Quadra should be approx. 10cm from scaffhook end of rope. Attach screwlink to bottom hole.
4. Attach S25N120P sling to D011 Quadra using screwlink, hand tighten screwlink. Ensure non sewn end of sling is attached to screwlink.
5. Captivate CKS3 krab to other end of sling (stitched end).
6. Attach D431 Hurricane onto rope – around pulley wheel (close and latch front plate).

Disclaimer: It is the users responsibility to assemble the kit correctly referring to individual product user instructions.